

job name:   
 type:

## 24" z.rō™ spec sheet 90CRI

### material

#### trim ring

3" h roll formed aluminum extrusion. 6061 T1 alloy. .100 typ. wall. available in 15 standard powder coat paint finishes listed below. premium RAL and wood finishes also available. satin black canopy and cord standard on wood finishes.

#### diffuser

satinice WD855 minimum 72% light transmission, light scattering, glare reduction, colorless diffusion acrylic.

#### reflector

internal White Optics film, 97% reflective and highly diffuse, ensures consistent performance across all trim finishes.

#### LED

premium architectural grade flexible LED PCB in 3000K, 3500K, or 4000K. (90+ cri standard). under normal operating conditions, the LEDs employed are rated for >50,000hrs L70 (6.8K) per IES TM-21 from LM-80 test data.

#### driver (remote)

programmable, UL class P, class2, universal input (120-277v), constant current, 0-10v controllable, 1% minimum dimming level. remote driver enclosure standard. consult factory for distances over 33 feet.

#### mounting

5" dia. spun steel canopy painted to match trim is designed to mount to a 4" octagon junction box (by other). satin black canopy standard on wood finishes. 6' tripod suspension of stainless steel cables attaches to reflector with field adjustable grippers that allow for exact AFF mounting heights. slip ring coupler at ceiling allows for easy wire connections. or select 12ft adjustable suspension. (drawing below) satin black canopy and cord standard on wood finishes.

#### finish

select from 15 standard powder coat paint finishes listed below. premium RAL and wood finishes also available. satin black canopy and cord standard on wood finishes.

#### emergency

recommend use of inverter (by other).



## catalog number

--	--	--	--	--	--

size	CCT	lumens*	painting finish	power cord	options
<b>P5724.LV</b>	<b>30</b> 3000K	<b>LO</b> 2600 lm	<b>AP</b> anodized paint	<b>WHPC</b> white power cord	<b>6FT</b> 72" adj cables
(2ft) 24" dia X 3" ht	<b>35</b> 3500K	<b>HI</b> 5200 lm	<b>BS</b> brass	<b>BKPC</b> black power cord	<b>12FT</b> 12ft adj suspension
See p.2 for info on P5736	<b>40</b> 4000K	<b>CL</b> xxxx lm custom lumens consult factory 2600 - 10400 lm	<b>BU</b> blue	<b>SBPC</b> silver braid power cord	<b>ELD</b> EldoLED*
	<b>RGBW35</b>	RGBW 3500K	<b>BZ</b> bronze		<b>LUT</b> Lutron* *consult factory
	<b>TW2765</b>	tunable white 2700K - 6500K	<b>CP</b> champagne		
		*preliminary delivered lumens	<b>FB</b> flat black		
			<b>GM</b> gun metal		
			<b>MB</b> military blue		
			<b>MW</b> matte white		
			<b>OR</b> orange		
			<b>RD</b> red		
			<b>SB</b> satin black		
			<b>SS</b> satin silver		
			<b>TG</b> textured gray		
			<b>YO</b> yellow		



remote enclosure

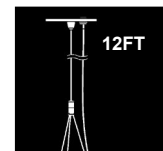
### premium finish

**RAL** specify RAL#

### wood finish

- ASH** ashwood
- ENG** english brown oak
- ESP** espresso

satin black canopy and cord standard on wood finishes



Intertek  
DRY / DAMP



job name:   
 type:

# 36" z.rō™ spec sheet 90CRI

**material**

**trim ring**  
 3" h roll formed aluminum extrusion. 6061 T1 alloy. .100 typ. wall. available in 15 standard powder coat paint finishes listed below. premium RAL and wood finishes also available. satin black canopy and cord standard on wood finishes.

**diffuser**

satinice WD855 minimum 72% light transmission, light scattering, glare reduction, colorless diffusion acrylic.

**reflector**

internal White Optics film, 97% reflective and highly diffuse, ensures consistent performance across all trim finishes.

**LED**

premium architectural grade flexible LED PCB in 3000K, 3500K, or 4000K. (90+ cri standard). under normal operating conditions, the LEDs employed are rated for >50,000hrs L70 (6.8K) per IES TM-21 from LM-80 test data.

**driver (remote)**

programmable, UL class P, class2, universal input (120-277v), constant current, 0-10v controllable, 1% minimum dimming level. remote driver enclosure standard. consult factory for distances over 33 feet.

**mounting**

5" dia. spun steel canopy painted to match trim is designed to mount to a 4" octagon junction box (by other). satin black canopy standard on wood finishes. 6' tripod suspension of stainless steel cables attaches to reflector with field adjustable grippers that allow for exact AFF mounting heights. slip ring coupler at ceiling allows for easy wire connections. or select 12ft adjustable suspension. (drawing below) satin black canopy and cord standard on wood finishes.

**finish**

select from 15 standard powder coat paint finishes listed below. premium RAL and wood finishes also available. satin black canopy and cord standard on wood finishes.

**emergency**

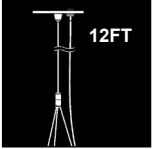
recommend use of inverter (by other).



## catalog number

--	--	--	--	--	--

size	CCT	lumens*	painted finish	power cord	options
<b>P5736.LV</b> (3ft) 36"dia X 3"ht	<b>30</b> 3000K <b>35</b> 3500K <b>40</b> 4000K	<b>LO</b> 3800 lm <b>HI</b> 7600 lm <b>CL</b> xxxx lm <small>custom lumens consult factory 5000 - 20000 lm *preliminary delivered lumens</small>	<b>AP</b> anodized paint <b>BS</b> brass <b>BU</b> blue <b>BZ</b> bronze <b>CP</b> champagne <b>FB</b> flat black <b>GM</b> gun metal <b>MB</b> military blue <b>MW</b> matte white <b>OR</b> orange <b>RD</b> red <b>SB</b> satin black <b>SS</b> satin silver <b>TG</b> textured gray <b>YO</b> yellow	<b>WHPC</b> white power cord <b>BKPC</b> black power cord <b>SBPC</b> silver braid power cord	<b>6FT</b> 72" adj cables <b>12FT</b> 12ft adj suspension <b>ELD</b> EldoLED* <b>LUT</b> Lutron* <small>*consult factory</small>



remote enclosure



Intertek  
 DRY / DAMP

**premium finish**

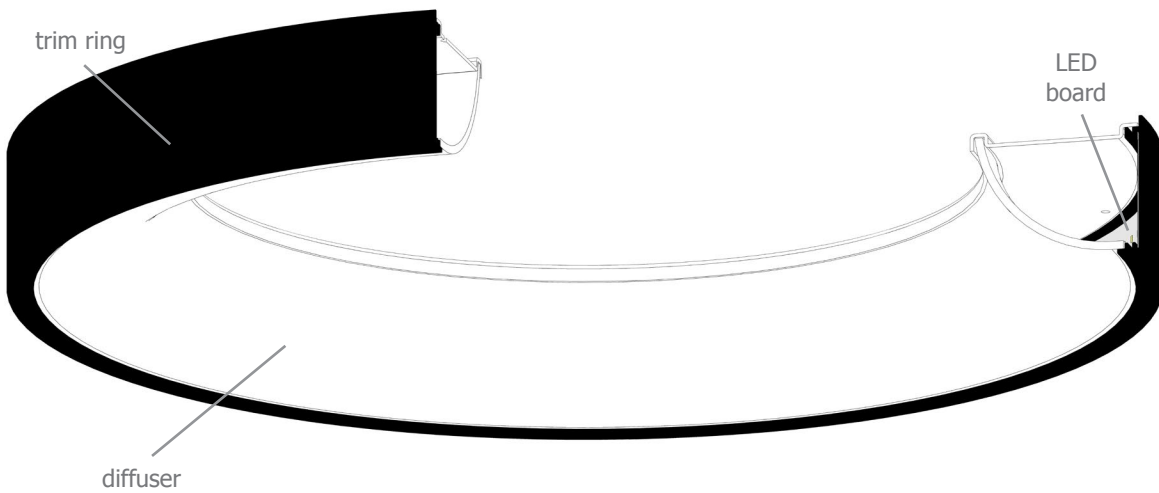
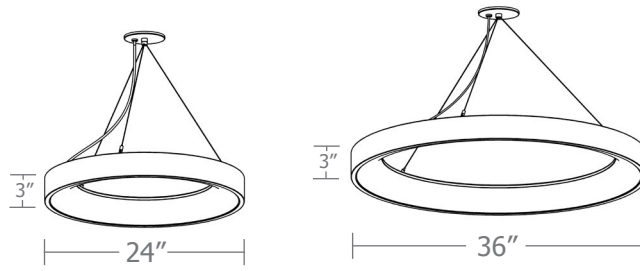
**RAL** specify RAL#

**wood finish**

- ASH** ashwood
- ENG** english brown oak
- ESP** espresso

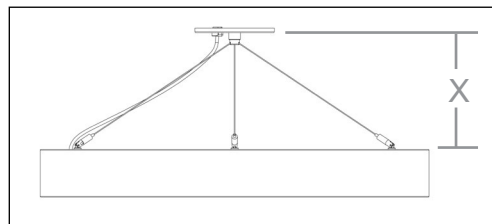
satin black canopy  
 and cord standard  
 on wood finishes





.LV

remote driver enclosure



min. suspension length.

	X
<b>P5724</b>	8"
<b>P5736</b>	11"

## z.rō™ RGBW spec sheet 90CRI

### material

#### trim ring

wafer thin 3”h roll formed aluminum extrusion. 6061 T1 alloy. .100 typ. wall. available in 15 standard powder coat paint finishes listed below. premium RAL and wood finishes also available.

#### diffuser

satinatec WD855 minimum 72% light transmission, light scattering, glare reduction, colorless diffusion acrylic.

### optics

#### reflector

.064” aluminum array platform painted high reflectance (>92%) matte white powder coat provides 100% downlight. for uplight, specify under options.

### LED

premium architectural grade flexible LED PCB in 3000K, 3500K, or 4000K. (90+ cri standard). under normal operating conditions, the LEDs employed are rated for >50,000hrs L70 (6.8K) per IES TM-21 from LM-80 test data.

### driver (remote)

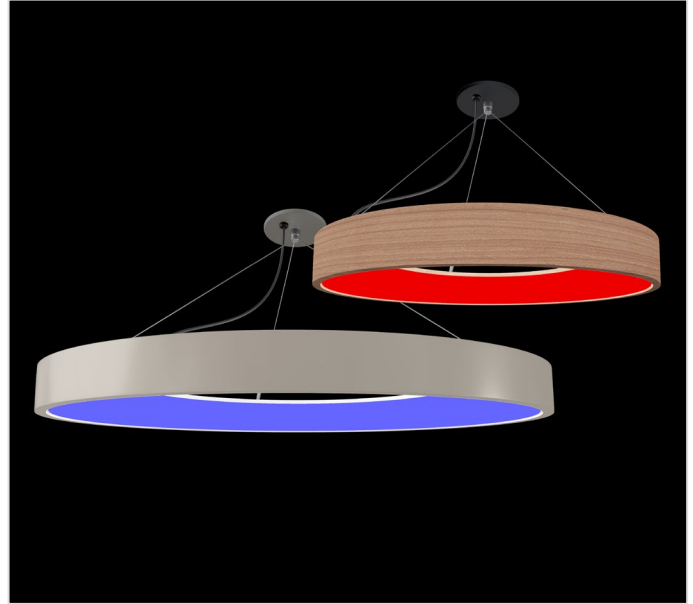
infinite color control, enabling stunning lighting effects with constant voltage LEDs for architectural lighting applications. whether single color for accent, tunable white for circadian applications, or full color RGB for entertainment product solutions, these drivers provide flicker-safe dimming to 1% with DALI or DMX and allows you to create your color or dynamic show without an external controller. additionally, these LED drivers work seamlessly with other controls, and intelligent luminaire elements.

### mounting

5” dia. spun steel canopy in satin white is designed to mount to a 4” octagon junction box (by other). 6’ tripod suspension of stainless steel cables attaches to reflector with field adjustable grippers that allow for exact AFF mounting heights. slip ring coupler at ceiling allows for easy wire connections. or select 12ft adjustable suspension. (drawing below)

### finish

select from 15 standard powder coat paint finishes listed below. premium RAL and wood finishes also available.



## z.rō™ TW2765™ spec sheet 90CRI

### LED

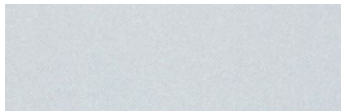
high performance tunable white spec-grade LED modules for excellent circadian lighting effects. from 2700K – 6500K CCT and anywhere in between with beautiful uniform color blending. with 2 channel constant current architecture, this high performance LED module provides the versatility needed to bring color tunable white capability to any architectural application.



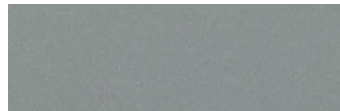
## Powder Coat Paint Finishes



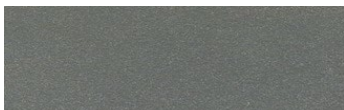
**MW** matte white



**AP** anodized paint



**SS** satin silver



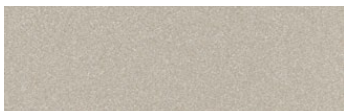
**TG** textured gray



**FB** flat black



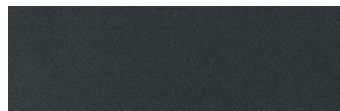
**SB** satin black



**CP** champagne



**BZ** bronze



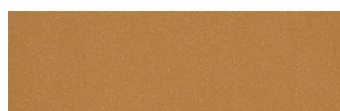
**GM** gun metal



**OR** orange 2011



**BU** blue 5017



**BS** brass



**RD** red 3020



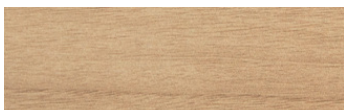
**YO** yellow 1018



**MB** military blue

## Premium Finishes\*

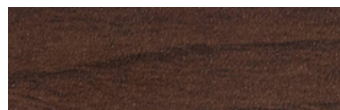
### Wood Finishes



**ASH** ashwood



**ENG** english brown oak



**ESP** espresso

For accurate color verification, actual finish samples are available upon request.



**RAL#**

\*Available on select series. Consult product submittal for availability.

